

Location: Hippo Haven Adventure Aquarium, Camden New Jersey

Species: Nile Hippo

Equipment: Hydraulically operated slide gates dividing stalls and pools, Hippo TAMER™ with full floor scale.

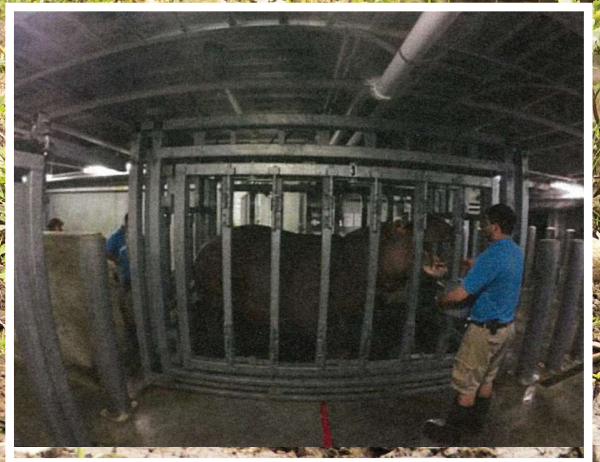
Notes:

The TAMER™ is used primarily for weighing the two female hippos; Genny, born 7/10/2000, and Button, born 3/22/1997; on a weekly basis and getting a good look at them as they go through the TAMER™ twice a day as they move on and off the exhibit. This simple routine has helped the hippos feel very comfortable in the TAMER™ and has allowed the training staff to focus on target training and preparing the hippos for voluntary blood draws. Blood draws are an important animal management and research tool. Successful voluntary blood draws on a regular basis has allowed the aquarium to launch a study that will compare fecal and serum hormone levels on these hippos (see article on page 59 of the September 2014 issue of Connect).

The TAMER™ provides a safe place for blood draws, "We experimented with different tail positions and needle angles, finding success with drawing blood from the side of the tail," says Mark Hacker, Animal Husbandry Staff.



Blood being drawn in the TAMER™



Training session in the TAMER™

For more information about the TAMERS™ at this location, contact Mark MacNamara at faunaresearch@gmail.com



ALBUSTAN

ZOOLOGICAL CENTER

Location: Al Bustan Zoological Center, Meleha, Sarjah, UAE

Species: Indian Rhino

Equipment: Manual Rhino TAMER™ with full floor scale.

Notes:

The rhinos are trained in the TAMER™ on a regular basis. The TAMER™ makes it possible to record daily weight gains on the pregnant female and safely draw blood samples and perform routine veterinary exams. The mission is to strive to be a sustainable zoo based on sound conservation principles and ethics and to be an institution dedicated to the promotion of education, conservation, breeding endangered species and research. The 17ha zoo is home to hundreds of animals including over 652 ungulates representing 32 species, and a pair of Indian rhinos recently acquired from the San Diego Zoo. The rhino exhibit and management area comprise a .5ha habitat with a deep pool and a cooled holding area and night house.

"Things are going fantastically well here! The TAMER™ is great and we have managed to get weights on both animals. They are using it as if they have been doing this forever! I'm very chuffed," says Kate Burns, Veterinary Nurse.



Asha in the TAMER™ October 2013

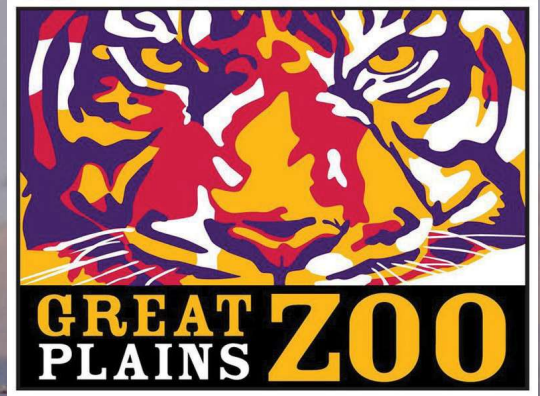


Meyer De Kock, Manager, inspecting the TAMER™ manual slide door with adjustable vertical pickets.



Inside the rhino's air conditioned night house and management area.

For more information about the TAMERS™ at this location, contact Mark MacNamara at faunaresearch@gmail.com



Location: The Rare Rhinos Exhibit, Great Plains Zoo, Sioux Falls, South Dakota

Species: Black Rhino

Equipment: Manual swing and pre-hung roller gates, hydraulic roller gates and Rhino TAMER™ with built in scale, and exterior rhino doors insulated and weather stripped.

Notes:

Completed in 2010, the outdoor exhibit boasts 2 beautifully landscaped exhibits featuring numerous sky lights and planters creating a bright, lush environment year round. The exhibit is home to Jubba a 16 year old male, Imara a 15 year old female and their male calf Kiano, born October 7 2010.

All of the rhinos are moved through and trained in the Rhino TAMER™ as part of their daily routine. The TAMER™ makes it possible to record daily weights, safely give baths, apply mudpacks, draw blood samples, give injections and vaccinations, as well as perform routine vet exams and most medical treatments.

"Having the right equipment can make a big difference in the care and husbandry of rhinos. The Rhino TAMER™ is definitely one of the best components of the new barn," says Lisa Smith, Director of Animal Programs.



A pat on the back from keeper Amanda Crowberg



Jubba enjoying his new home at the Rare Rhinos Exhibit

For more information about the TAMERS™ at this location, contact Mark MacNamara at faunaresearch@gmail.com